

60 Years of Engineering Excellence

# FABRIMECH ENGINEERS PVT LTD

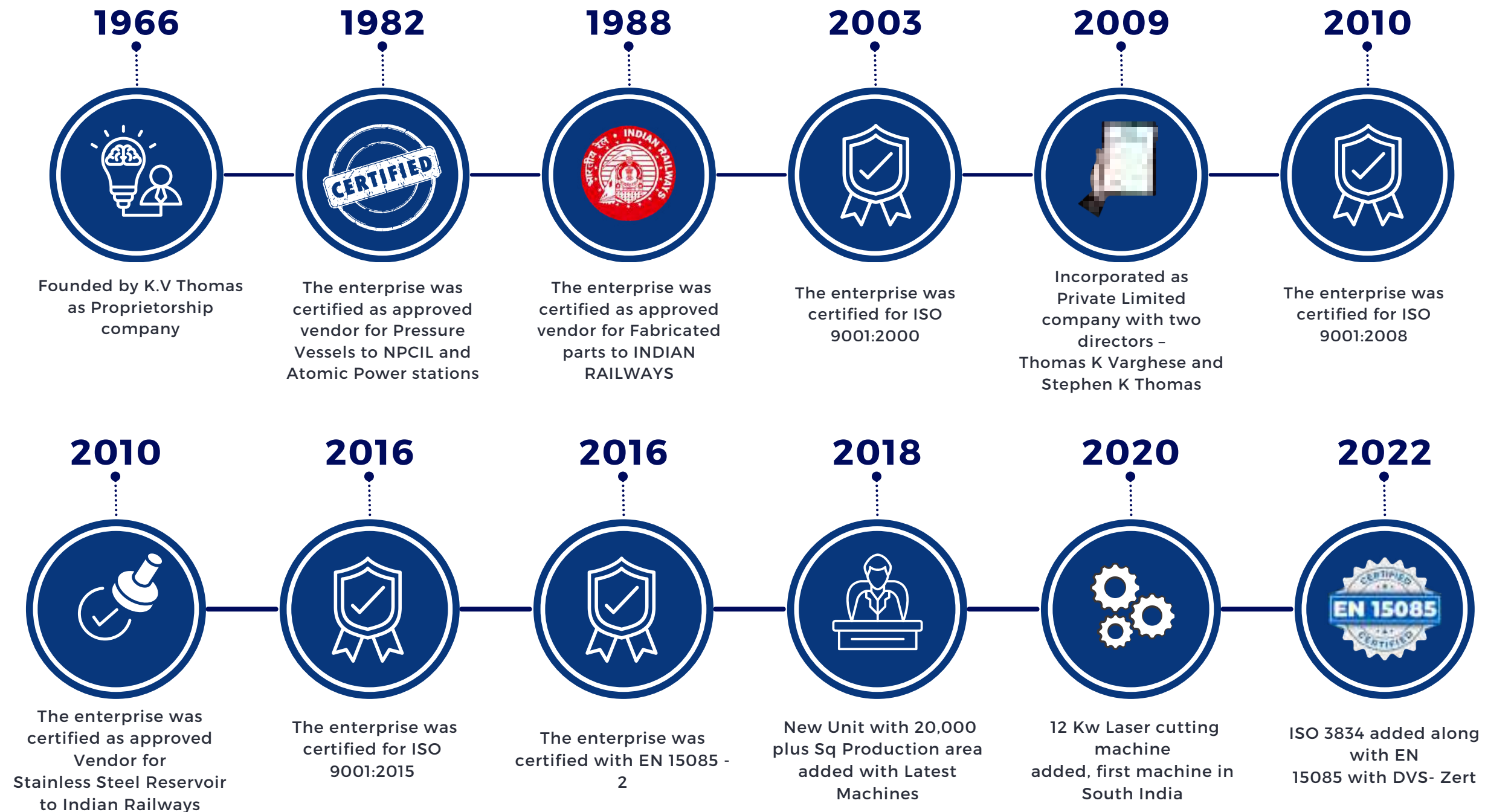


Unit-1 - 32, SIDCO Industrial Estate, Ambattur, CHENNAI INDIA  
Unit-2 - 72b, 12 Street, SIDCO Industrial Estate, Ambattur, CHENNAI, INDIA



# COMPANY MILESTONES

Fabrimech Engineers is a Third-generation Pressure Vessel & Fabricated parts manufacturing company



# NATURE OF BUSINESS

## PRODUCTS

- Reservoirs
- Tanks
- Accumulators

Fabricated Frames,  
Sub Assemblies  
(Press Parts +  
Machined Parts )

Toilets & EWC Wash Basin

## MATERIALS

- Mild Steel
- Stainless Steel

- Mild Steel
- Aluminum
- Stainless Steel

- Stainless Steel

## PROCESS

Laser cut, Press working,  
Welding, 100% Radiography,  
Painting(OS)

Laser Cut, Bending, Welding,  
100% Radiography, Painting  
(OS)

Laser cut, Pressing  
Welding, Polishing

FABRIMECH ENGINEERS PVT LTD

# OUR CUSTOMERS



**SIEMENS**



न्यूक्लियर पावर कॉर्पोरेशन ऑफ इंडिया लिमिटेड  
Nuclear Power Corporation of India Limited



**STADLER**



# INFRASTRUCTURE MACHINERY



CNC - FIBRE LASER - 120000w



CNC - FIBRE LASER - 2000w



CNC - Press Brake



AUTO CS DOUBLE STATION WELD



DEBURING MACHINE



5 AXIS- WELDING ROBOT



Lorch Welding machines



4 ROLL PLATE ROLLING MACHINE



Welding Services



TAPPING MACHINE



SHOT BLASTING



CNC TURNING



Vertical Machining Center



Hydraulic Press



LASER WELDING MACHINE

# FACTORY

Unit 1 : 10,200 Sq ft  
Unit 2 : 45,900 Sq ft  
Unit 3 : 152,460 Sq ft





**Unit 1 : 10,200 Sq ft  
Ambattur Estate**



**Unit 2 : 45,900 Sq ft  
Ambattur Estate**



**Unit 3 : 152,460 Sq ft  
Gummidipoondi  
(Future Expansion)**

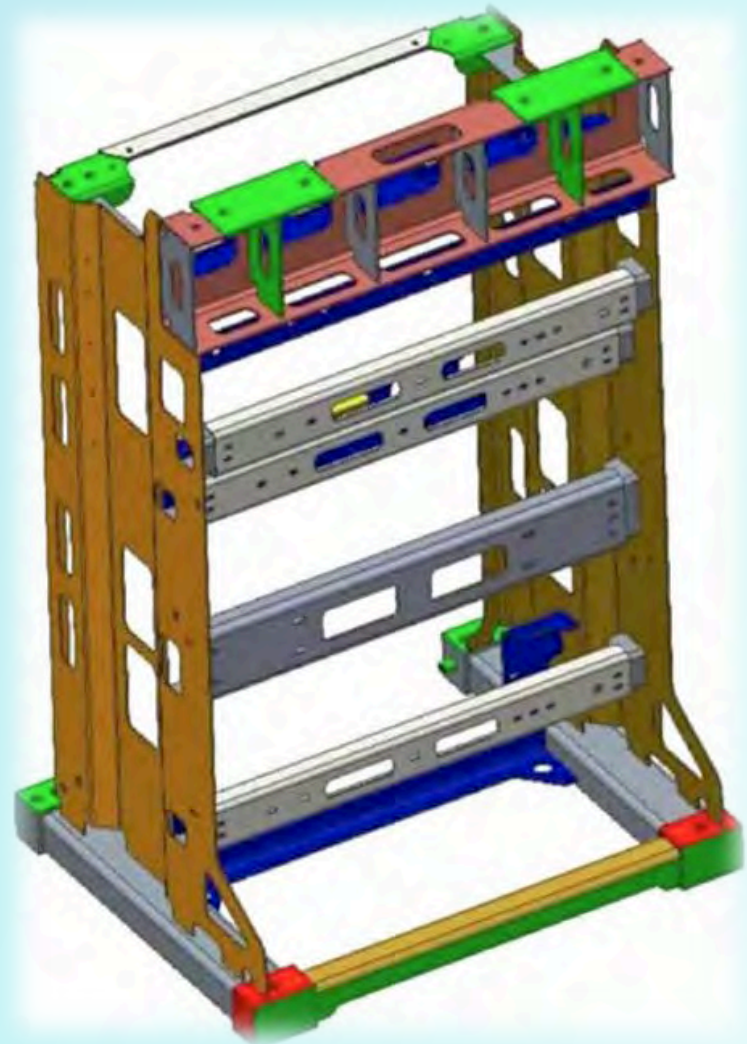
# SPECIALISED WELDING PROCESS AS PER EN AND ASME



# PRODUCTS – AIR PRESSURE RESERVOIRS & EXPANSION TANKS



## PRODUCTS: SPECIALISED FRAMES FOR BCM PROJECT - KBI



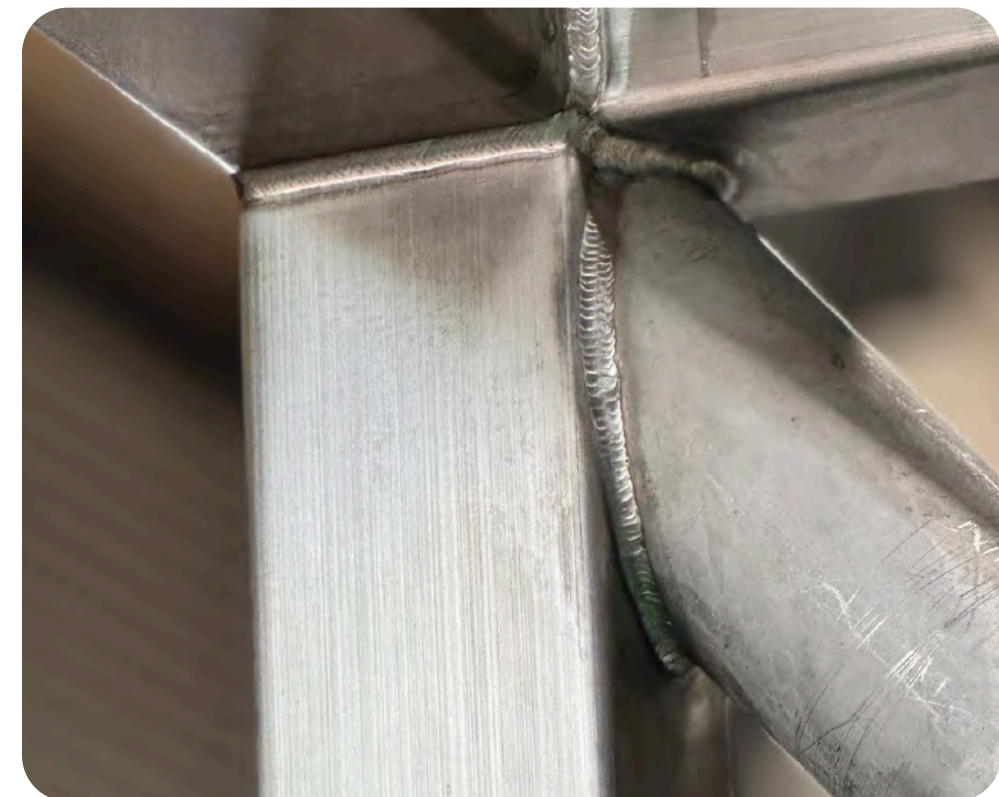
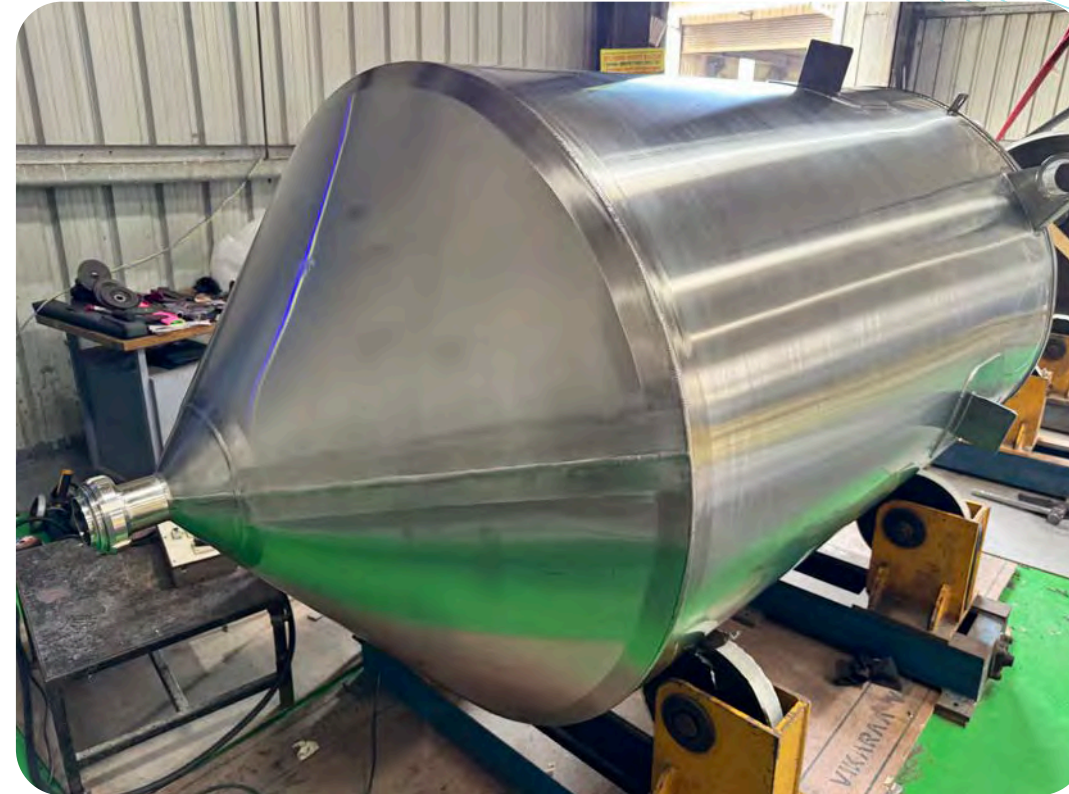
### Capabilities

#### Drawing Conversions and 3-D Modeling.

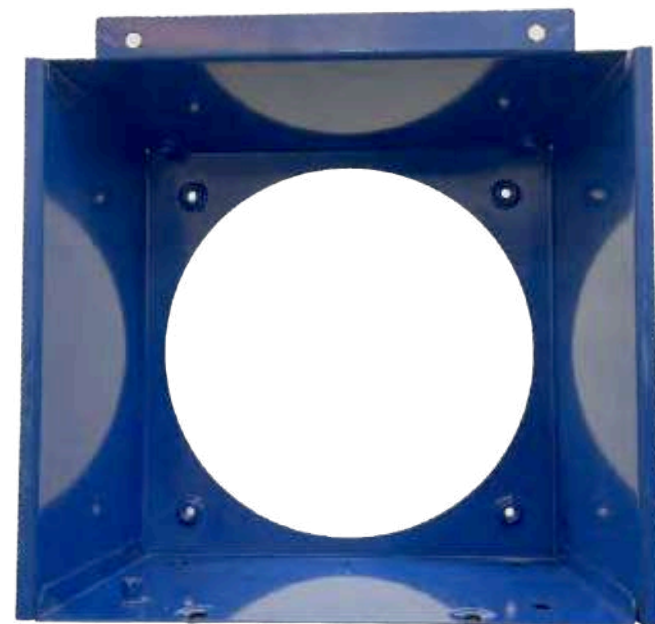
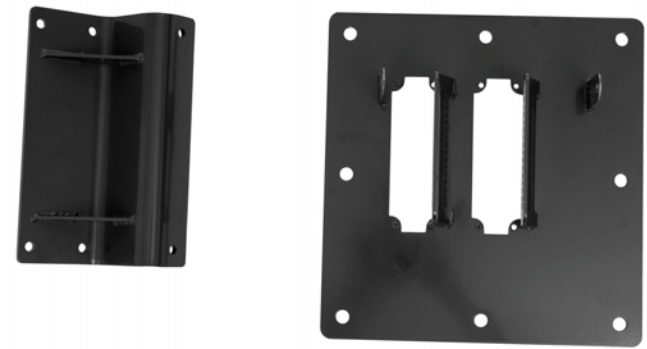
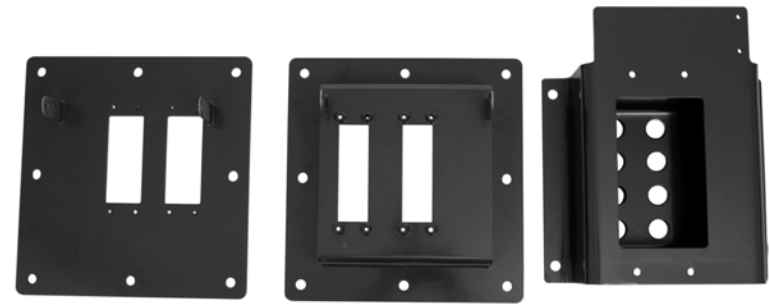
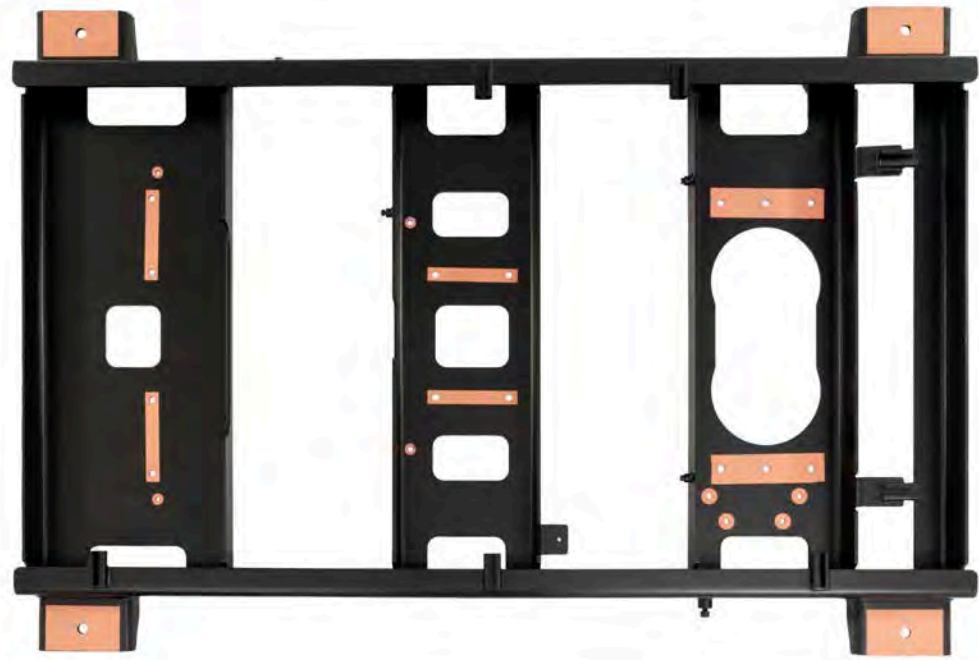
- Assembly Fixtures dev.
- Welding
- Painting
- Complete Inspection.

Total height 2mtrs - Tolerance 1mm Perpendicularity 1mm - Measured by CMM

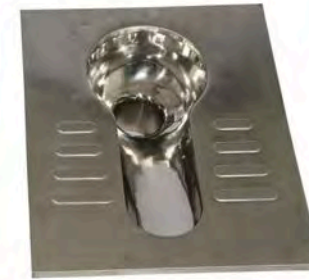
# 750L STAINLESS STEEL TANK FOR THE FOOD PROCESSING INDUSTRY!



# FRAMES FOR SPECIAL APPLICATIONS



# STAINLESS STEEL BASINS AND CLOSETS



## PRODUCTS: CRITICAL FABRICATED PROJECTS



**PRESSURE VESSELS FOR ATOMIC POWER STATION**



**GANGWAY FOR SHIP YARD**



**FILTER VESSELS**

# STAINLESS STEEL NOSE CONE FOR INDIAN RAILWAYS



## COUNTRIES EXPORTED



**U.S.A**



**GERMANY**



**CANADA**



**AUSTRALIA**



**U.A.E**



**SWITZERLAND**



**CZECH REPUBLIC**

## CERTIFICATION - EN 15085 - 2



### CERTIFICATE

Welding of railway vehicles and components according to EN 15085-2

ZE-16083-01-00-EN15085-2022.0068.001

DVS ZERT GmbH hereby certifies that the welding company

**Fabrimech Engineers Pvt. Ltd.**  
**32, SIDCO Industrial Estate**  
**Ambattur Industrial Estate**  
**600 098 Chennai, Tamil Nadu**  
**India**

fulfills the requirements for the scope according to

**EN 15085-2 classification level CL1**  
**in the type of activity P**

in the range indicated in the annex.

validity: 2022-11-28 until 2025-11-27

Düsseldorf, 2022-11-28  
Place and date of issue

Lead auditor: DOSS

  
Dipl.-Ing. GURSCHE  
Head of certification body

DVS ZERT GmbH, Aachener Straße 172, 40223 Düsseldorf, GERMANY





### Scope of the certificate

ZE-16083-01-00-EN15085-2022.0068.001

Scope:

Welding process according to EN ISO 4063	Material group according to CEN ISO/TR 15608	Dimensions	Remarks
135	1.1, 1.2, 8.1	t = 3 - 12 mm t = 3 - 12 mm t = 3 - 20 mm t = 3 - 12 mm D ≤ 90 mm	FW, BW BW FW, WPS, WPS & WPOR FW
135/141	8.1	t = 3 - 12 mm	BW
141	1.2, 7.3.1, 8.1	t = 3 - 12 mm t = 3 - 12 mm D ≤ 90 mm	BW WB

Area of Application:

- New build of components for railway vehicles
- assemblies: supporting frames for external equipment parts (tanks and compressed air containers), brake equipment (brake cylinders), fuel tanks for vehicles
- further assemblies: pressure gas tanks, tanks and tank containers for rail vehicles with test pressure, roof construction (pantograph), compressed air reservoir for rail vehicles, lavatory parts and water containers
- except design and purchasing of welded components

Responsible welding coordinator(s): Thomas Varghese, Level A born: 1971-09-02

1st deputy(ies) of the responsible welding coordinator(s): Rajesh Karmis, Level B born: 1979-05-05

Others deputies: Benjamin Varghese, Level C born: 1998-01-17  
Moses Baris, Level C born: 1990-02-28  
Karthikeyan Gunasekaran, Level C born: 1995-04-06

Remarks: further workshop:  
# 72B, 12th Street, SIDCO Industrial Estate  
Ambattur Industrial Estate, 600 098  
Chennai - Tamil Nadu India

Register no.: DVSZERT/15085/CL1/068/22/L

General provisions:  
The General Terms and Conditions of the DVS ZERT GmbH apply in the currently valid version.

DVS ZERT GmbH, Aachener Straße 172, 40223 Düsseldorf, GERMANY



## CERTIFICATION - ISO 3834-2:2021 & ISO 9001 2015



### CERTIFICATE

D-ZE-16083-01-00-ISO3834-2022.0141.001

DVS ZERT hereby certifies that the company

**Fabrimech Engineers Pvt. Ltd.**  
**32, SIDCO Industrial Estate**  
**Ambattur Industrial Estate**  
**600 098 Chennai, Tamil Nadu**  
**India**

has furnished proof to fulfil the quality requirements for welding according to

**ISO 3834-2:2021**

in the extent mentioned on the reverse side.

validity: 28.11.2022 until 27.11.2025

Düsseldorf, 28.11.2022  
Place and date of issue

Doss  
Lead Assessor

  
Dipl.-Ing. Gurschke  
Head of certification body

DVS ZERT GmbH, Aachener Straße 172, 40223 Düsseldorf, GERMANY





### Certificate of Registration

**FABRIMECH ENGINEERS PRIVATE LIMITED**

#32, 2ND STREET, SIDCO INDUSTRIAL ESTATE AMBATTUR ESTATE,  
CHENNAI - 600 098, TAMILNADU, INDIA  
72-B, 12TH STREET, SIDCO INDUSTRIAL ESTATE, AMBATTUR,  
CHENNAI - 600 098, TAMILNADU, INDIA

has been assessed and Certified by Otabu Global Services Pvt. Ltd.  
as meeting the requirements of:

**ISO 9001:2015**

**Quality Management System**

For the following scope of activities:

**MANUFACTURING & SUPPLY OF PRESSURE VESSELS, FABRICATION AND MACHINED COMPONENTS**

Issue No.: 01  
Date of Certification: 09 June 2021  
1st Surveillance Due: 08 June 2022

Revision No.: 1 | NA  
2nd Surveillance Due: 08 June 2023  
Certificate Expiry: 08 June 2024  
(Subject to ISO 9001:2015 certification for scope of the required activities)

**Certificate No.: 0609Q130121**  
To Verify this Certificate please visit at [www.otabuglobal.com](http://www.otabuglobal.com)

  
MEMBER OF MULTILATERAL RECOGNITION ARRANGEMENT

  
ACCREDITED  
INTERNATIONAL ACCREDITATION SERVICE, USA



  
Dr. Anika Gupta  
(Managing Director)

**Otabu Global Services Private Limited**  
Accredited by IAS (International Accreditation Service, USA)  
Validity of this certificate is subject to annual surveillance audits done successfully  
The certificate is valid for the following scope of activities: Manufacturing and supply of pressure vessels, fabrication and machined components

# CONTACT US

## **Registered Office and Unit - I**

32, 2nd Street, SIDCO Ind Estate, Ambattur, Chennai – 600 098, INDIA

## **Unit - II**

72b, 12th Street, SIDCO Ind Estate, Ambattur, Chennai – 600 098

[fme@fabrimech.com](mailto:fme@fabrimech.com), 91+ 9840742321, 91-44-26523364/26252039

[www.fabrimech.com](http://www.fabrimech.com)

FOR MORE INFORMATION :

STEPHEN. K. THOMAS

DIRECTOR

91+ 9840049486

